

Standard assortment and customized solutions

Our wide range of high-quality standard products and custom-made solutions will increase your productivity, support your company's development and provide you with a clear, competitive advantage.

Sintered Bearings



Sintered bearings are self-lubricating (oil impregnated), maintenance-free sintered products which can be produced in large quantities in accordance with DIN 1850-3 or ISO 2795 standard. They possess excellent storage properties due to the precision manufacturing and porosity of the sintered material in accordance with DIN 30910-3 standard. These bearings are intended for medium loads and higher sliding speeds.

Wrapped Sliding Bearings



Wrapped bearings are maintenance-free or low-maintenance bearings produced in accordance with DIN ISO 3547 (DIN 1494) standard. The various bearing types and different materials make them ideal for hundreds of applications in numerous and diverse industries.

- Metal-Polymer Plain Bearings
- CuSn8-Bronze Wrapped Bearings

Bronze and Brass Turned Bearings



The high load capabilities of bronze alloys make them especially ideal for demanding bearing applications. For oil and grease lubricated applications.

- In accordance with DIN ISO 4379 (DIN 1850-1) Standard
- With lubrication grooves according to DIN ISO 12128
- Custom-made according to drawing or sample
- Individual manufacture

MBW Plain Bearings | Sliding Elements



The plain bearings and sliding elements are made of casted bronze material in which a special solid lubricant is embedded. The base metal allows for high loads and the solid lubricant makes it possible to use the bearings without additional lubrication. Additionally, MBW-bearings perform exceptionally without lubrication, under conditions of low speeds and high load.

Plastic Plain Bearings



Plastic plain bearings are produced by injection moulding. By adding lubricants, they are maintenance-free and therefore ideal for use in medical technology, in food, pharmaceutical and chemical industries.

Fiber Reinforced Composite Bearings



The reinforced composite structure enables the bearing to support high static and dynamic loads. They have an excellent shock and edge loading capacity, excellent corrosion resistance, and are dimensionally stable. These fibres reinforced composite bearings are available as bushes, plates, bearing segments and special forms depending on the particular material type.



Bimetallic Plain Bearings



Bimetallic plain bearings withstand high load and shock conditions. For this purpose, a metallic overlay is sintered on a support plate. Depending on the application, different bronze alloys are available. These bearings are not maintenance-free and require good lubrication.

High-Performance Plain Bearings



These bearings have a higher load capacity ($<820 \text{ N/mm}^2$) and PV value ($9.6 \text{ N/mm}^2 \times \text{m/s}$), operating temperatures and sliding speeds than any other plain bearing. Thanks to their strong corrosion resistance and durability, they have a longer service life.

Steel Bushings



Hardened steel bushings are used for specifically high loads at low speed, e.g. in construction, agricultural and earth conveyer machines, demolition tools, etc.

- oil and grease lubricated applications
- available with or without lubrication grooves

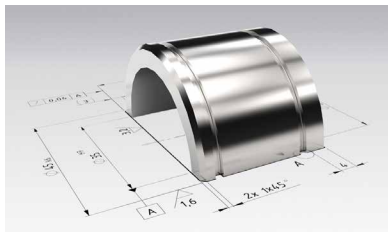
Bearings made of Carbon and Graphite



Carbon and graphite bearings are particularly suitable for corrosive environments and use at high and low temperatures. Very high chemical resistance.

- Plain bearings with and without steel frame
- Small, medium and large series
- Individual manufacture

Special Plain Bearings



Sophisticated constructions require components and dimensions outside the usual standards. Aside from our main ranges we are able to offer various other solutions including special sizes as well as special parts according to your wishes, drawings or specifications. For more information on these solutions, feel free to contact us.

Sintered Filters



Sintered parts with high porosity are mainly used as filters, silencers, for controlling and distributing gas and fluid flows or as flame resistors, they can also be used as aerators for fluids and stored bulk materials. The structure of the pores efficiently prevents long fibres from passing through.

- Standard version in stock, special parts are available for short term delivery

Sintered Components



We process custom-made structural parts without costly reworking in one pressing step with tight tolerances. By carefully selecting specific metal powders (DIN 30910-4), the desired final product properties can exactly be achieved.

Machined Bronze | Brass Components



We machine products according to customer drawings, made of bronze, brass or copper. Our machinery is suitable for producing prototypes and small, medium or larger series. Part size varies from 1.0 mm to large over 600 mm.

- According to drawing or samples, customized production

Web Shop 24/7



Order your plain bearings, sinter filters and compressed air silencers conveniently and at any time in our webstore. Take advantage of special offers and staggered prices with real-time inquiries available. For every online order you receive a 5% online-only discount on the total amount. More information under <https://shop.gleitlager.ch>.

